



NEMA 4X Continuous Hinge Quick Release Padlockable Extended Cover 8X8X6 Fiberglass-Opaque

By Wiegmann
Catalog # [HW-RHJ80806CHQR](#)

NEMA 4X Continuous Hinge Quick Release Padlockable
Extended Cover 8X8X6 Fiberglass-Opaque

Features

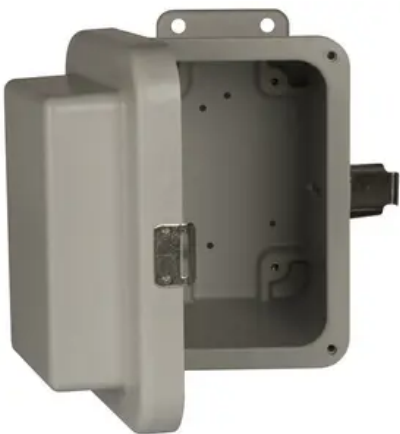
- Constructed of molded fiberglass
- Raised cover with continuous hinge and quick-release padlockable latches
- Poured seamless gasket provides a water-tight and dust-tight seal
- Mounting provisions are provided

General

Catalog Number	HW-RHJ80806CHQR
Color	Gray
Cover Type	Hinged Cover
Material	Fiberglass
Mounting Type	Wall Mount
Series	JIC
Type	Enclosure
UPC	786725878017

Dimensions

Cubic Capacity	288 cu.in
----------------	-----------



*Representative Image

Depth	6 in
Height	8 in
Weight	4.2 lb
Width	6 in

Certifications And Compliance

Buy American Compliant	Contact Manufacturer
Certified Listed	cULus
Nema Rating	4X
UL Listed	Yes

Logistics

Carton Quantity	1
-----------------	---

Product Assets

- [3D Models - HW-RHJ80806CHQR](#)
- [Catalogs - Wiegmann Non-Metallic Enclosures](#)
- [Engineering Drawing - HWDHW-RHJ80806CHQR-S](#)
- [SDS - HCC SDS](#)
- [Specifications - HW-RHJ80806CHQR](#)
- [Terms and Conditions - HCC Terms & Conditions](#)



A Hubbell brand